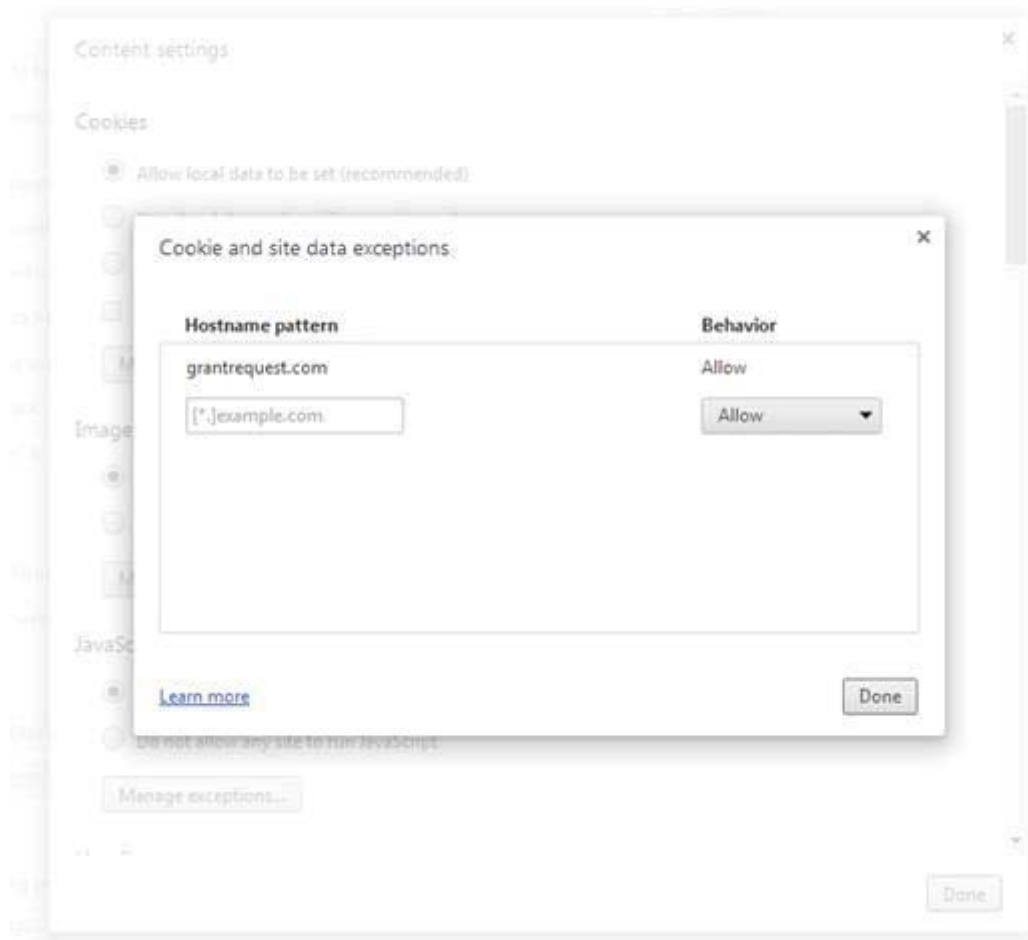


Special Note for users of Google Chrome:

- The CFSEM Application Portal supports a number of browsers including Internet Explorer, Mozilla Firefox, Safari and Google Chrome. Some users have reported issues with cookies when using Google Chrome. If you encounter an issue, please copy and paste this link into the address bar of Chrome:

chrome://settings/contentExceptions#cookies

After pasting this into Chrome, hit the Enter key on your keyboard and you will be taken to a “Cookies and site data exceptions” screen within the browser. A sample image appears below.



In the gray outlined box under the heading “Hostname pattern”, type **grantrequest.com** and hit Enter on your keyboard. Click the Done box on each of the pop-up windows and try accessing the application again. Should you still have difficulty, please contact us for assistance by calling (313) 961-6675 or by sending an email to applications@cfsem.org.